

*Sewing Patterns*  
by  
*Mrs H*

# The Sling Bag

## PATTERN



# *Materials Requirements:*

5/8yd (0.5m) Outer fabric

- Linen, drill, twill, duck, canvas, chino or other medium woven fabric.

5/8yd (0.5m) Lining fabric

- Quilting cotton, polycotton or lightweight woven fabric.

1/2yd (0.45m) fusible fleece

5/8yd (0.5m) medium weight interfacing

Please read the note on interfacing on page 1 for further information.

# *Notion Requirements*

2 x 1 1/2" (38mm) rectangular, round or oval rings

1 1/2" (38mm) triglide buckle

Alternative sizes can be used - please see note on page 1 under B -  
Adjustable strap

1 x 8" (21cm) zip

Larger can be used and cut down to size.

1 x Magnetic snap

# *Copyright Restrictions:*

Distribution, copying or re-selling this pattern in whole or in part is expressly forbidden.

You **may** sell individual finished items handmade by you using this pattern however use for mass production or contracting a third party to produce the items is prohibited.

If you decide to sell items that you have made from this pattern please include a credit back to 'Sewing patterns by Mrs H' on your listing.

Finished size when folded: W 33cm x H21cm x D12cm  
(13" x 8" x 4 1/2")

(c) Sewing Pattern by Samantha Hussey  
(c) Cover design by Benjamin James



### **A note on interfacing for this bag:**

This pattern is intended to produce a slouchy bag, so you will want to look carefully at your fabrics before you decide on which interfacing and stabilisers to use. If you are using a home décor type fabric, you will probably want to skip the fusible fleece and just use lightweight interfacing on the outer.

If you are using a quilting cotton you will probably wish to use fusible fleece on the outer, and the lightweight interfacing on the lining. The cutting out instructions assume you will be using quilting cotton for the outer and the lining.

Soft & Stable will usually be too stable for such a slouchy bag as this, however you may wish to give it a try!

### **Cutting out**

A – Bag Main (Pattern piece)	Cut 2 outer Cut 2 fusible fleece Cut 2 lining Cut 2 lightweight interfacing
---------------------------------	--

B – Adjustable Strap 44" x 6" (110cm x 15cm)	Cut 1 outer or contrast fabric Cut 1 lightweight interfacing
--	---

- This strap is based on a 1.5" (38mm) buckle.
- For other buckle sizes, adjust the width to be 4 times the buckle width.
- If you wish to make a static handle rather than an adjustable strap, cut to 32" x 6" (81cm x 15cm)

C – Side Tabs 6" x 4" (15cm x 10cm)	Cut 2 outer or contrast fabric
---	--------------------------------

D – Slip Pocket 12" x 14" (30cm x 35cm)	Cut 1 lining Cut 1 lightweight interfacing
---	---

E – Optional Zipped pocket 12" x 14" (30cm x 35cm)	Cut 1 lining Cut 1 lightweight interfacing
--	---

- You may wish to cut your fusible fleece 1/4" (5mm) smaller to reduce bulk in your seams.
- The bag main (A) pattern piece suggests cutting out the dart from the interfacing & fusible fleece. This is to reduce bulk, but also to help you see where the dart marks are.
- You may wish to label each piece on the back with its corresponding piece letter with some masking tape or post-its.
- Seam allowance is 1/2" (12mm) unless otherwise stated.

### **Stabilisers**

- 1) Fuse fleece to the wrong side of the bag mains (A).
- 2) Fuse lightweight interfacing to lining mains (A), Strap (B), Slip pocket (D) and optional zipped pocket (E).

If you wish to quilt your bag outers, now is the time to do so.

### **Create the Strap**

You may find it helpful to use a spritz of spray starch on your strap piece B before you start pressing. This will create a crisp edge.

- 3) Fold under the short ends on your strap pieces (B) 1/4" and press into place. Fold the strap in half, wrong sides together, matching long edges.



- 4) Open the strap out and fold the bottom raw edge to the centre crease and press into place.

- 5) Fold the top raw edge down to the centre crease and press into place.

- 6) Fold the whole strap in half along the original centre crease line and press well.

- 7) Stitch around all four edges neatly with a 1/8" seam allowance to create your strap. Place to one side for the moment.



### **Create your side tabs.**

8) Fold long sides of one of your side tabs (C ) down ¼" (6mm) and press into place. Fold in half short sides together and press.

Open out again.

9) Fold the top short edge in to the centre crease and press into place.

10) Fold the bottom short edge in to the centre crease and press into place.

11) Fold the whole tab in half along the original centre crease line and press well.

12) Stitch along the two long sides neatly with a 1/8" (3mm) seam allowance.

13) Repeat for the other side tab.

Your tabs should be around 1.5" x 4" (38mm x 10cm) when stitched.

14) Thread your ring onto one of the side tabs to the centre, and stitch as near to the ring as possible to hold it in place.

15) Top stitch along the bottom of the side tab to keep the ends together. Repeat for the other side tab.

You may need to use your walking foot for this step if you have one.





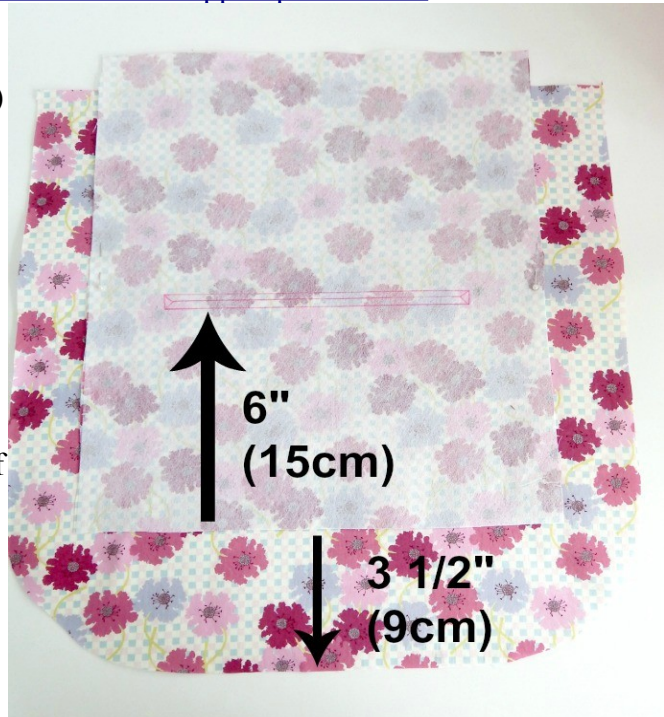
### **Create your optional zipped pocket**

For more photos of fitting a zipped pocket, please see my blog tutorial,  
<http://handmadebymrsh.blogspot.co.uk/2013/03/how-to-sew-zipped-pocket.html>

16) To create the optional zipped pocket in your lining lay your interfaced pocket piece (E) in the centre of your lining main (A) right sides together. Position it approximately 3 1/2" (9cm) from the bottom edge, side centred, and pin at the edges.

17) Measure the teeth of your zip and draw a box with your fabric marker the length of your zip teeth with a height of 3/8" (10mm).

Position the bottom of your box in the centre of piece (E) about 6" (15cm) from the bottom of pocket piece (E).



18) Draw a triangle at each end within the box and connect with a central line.

This is where you will cut through both layers once sewn.

19) Sew around the box and then cut through the triangles and central line. Clip very close to the corners without cutting through your stitching. Remove your pins.

20) Push the pocket piece (E) through the lining main (A) to the back.



21) Press well and manipulate the fabric to lay flat. Trim any bulky stabiliser around your opening.

22) Pin, baste or use fabric glue to secure your zip to the back of your pocket and lining with the teeth showing through the gap. You may find it handy to stitch the end of your zip before you baste.

23) Change your presser foot to your zip foot to sew.

These types of zips do take practise but if you're slow and steady you can achieve a professional finish easily.

24) Sew along the edge of your zip opening trying to keep your zip straight. As you approach the zip pull leave the needle down and lift the presser foot.



25) Unzip the zip until the pull is out of your way, lower your presser foot and sew on until you need to re-zip.

Continue around all 4 sides of your opening.

26) Fold the top of the pocket piece down to meet the bottom of the pocket piece (E) and sew around the three open sides, without catching the lining main(A) fabric.



### **Sew the slip pocket**

27) Fold your pocket piece (D) in half, right sides together to end up with a 12" x 7" (30cm x 18cm) pocket piece.

28) Stitch around the three open sides, leaving a 5" (12cm) turning gap.

29) Clip the corners and then turn right sides out. Press well.

30) Top stitch along the 12" (30cm) edge without a gap. This will be the top of your pocket.





31) Position the pocket (D) over the other lining main (A) without the zipped pocket, 4" (10cm) from the bottom of the lining main (A) in the centre, 2 1/2" (6cm) away from each side edge.

32) Sew around the sides and bottom closing the turning gap.

If you wish to divide your pocket into two, stitch a vertical line in the centre of your slip pocket.

For a pen pocket, sew another line 1 1/4" (3cm) from one side.



### **Fitting the magnetic snap**

33) Fold one of your lining main (A) pieces in half to find the centre and finger crease. Place your washer on the centre crease, 1 1/2" (38mm) from the top edge.

34) Mark the prong holes in your washer with a fabric marker.

You may wish to add extra interfacing to where your magnetic snap will sit, or add a dab of fray check once your prong slits are cut.

35) Cut the slits in your lining main (A) and push the prongs of the snap through from the right side.

36) Use a scrap from your fusible fleece and mark the prongs in the centre. Push the fusible fleece onto the snap prongs and then the washer.

37) Bend the snap prongs to hold it in place.

38) Repeat for the other magnetic snap half and the other lining main (A) piece.





### **Sew the lining darts & constructing the lining**

39) Matching dart lines on one of your lining main (A) pieces, pin your lining dart and sew along the line.

(For a slightly narrower bag base, you can line your presser foot edge with the line and sew.)

40) Repeat for the other three darts. You can choose to trim the darts, or just press them to one side.



41) Matching dart lines and top sides, pin the lining main pieces (A) together, right sides facing and sew around the sides and bottom. Leave a 6" turning gap at the bottom.

You may wish to press your side seams open to reduce bulk when top stitching at the end.

42) Clip the curves of your lining making sure you don't cut into the stitching line. You may find it easier to use pinking shears on your curves instead.

Place your lining to one side now.



### **Create your bag outer**

If you're using very heavy or thick fabric, you may wish to change your needle for a larger size.

43) Matching dart lines on one of your bag main (A) pieces, pin your dart and sew along the line.

(If you chose to sew a slightly narrower bag base, remember to do the same for your bag outers)

44) Repeat for the other three darts. You can choose to trim the dart, or just press it to one side.

45) Matching dart lines and top sides, pin the bag main pieces (A) together, right sides facing and sew around the 3 edges. Do not leave a turning gap at the bottom.

46) Clip the curves of your outer making sure you don't cut into the stitching line. You may find it easier to use pinking shears on your curves instead.

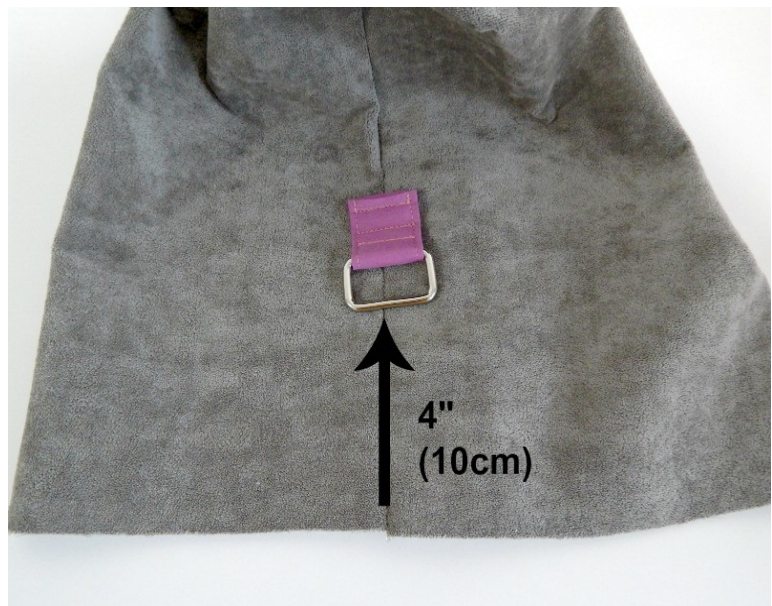
You may wish to press your side seams open to reduce bulk when top stitching at the end.

### **Attaching the side tabs**

47) Turn your bag main right side out and using the side seam as a guide, match the centre of your side tab and pin in place with the ring 4" (10cm) from the top edge of the bag main.

48) Stitch in place along the bottom of the tab, and just under the ring, where you stitched before. You can reinforce these with extra lines of stitching if you wish.

49) Repeat 47) - 48) for the other side tab.



### **Insert the lining**

50) With your bag outer right side out and your bag lining wrong side out, slip your outer inside your lining matching top edges & side seams.

51) Pin around the top edge and then stitch.





52) Turn your bag through the lining turning gap and stitch the gap closed.

53) Press the top edge well pushing the lining inside the bag outer.



54) Top stitch around the whole top edge to keep the lining in place.

You may wish to lengthen your stitch length for neater top stitching over this thickness.

### **Finishing the strap**

If you have created a static strap, then follow 55) – 56). If you have created an adjustable strap, skip ahead to 57).

#### **Static Strap**

55) Thread one end of your strap (B) ½” (12mm) through one of your side tab rings. Stitch in place.

56) Making sure your strap is not twisted, thread the other end through your other side tab ring ½” (12mm) and stitch in place.

#### **Adjustable Strap**

57) Thread one end of your strap (B) through the triglide buckle and stitch to secure as per the photograph. The right side of the triglide is facing up in the photograph to the right.



58) Thread the other end of your strap through one of the side tab rings.



59) Thread the loose end up, through the triglide and out the other side.

This should cover the previously stitched strap end.



60) Thread the loose end of your strap through the second side tab ring 1/2" (12mm) from front to back, and stitch to secure in place as per the picture on the right.





You may wish to fold your bag where you would like it to fall naturally, and press well to help it fall this way before use.



Please feel free to contact me if you have any questions or concerns at [pleaserelease.me.letmesew@gmail.com](mailto:pleaserelease.me.letmesew@gmail.com) and I'd love to see what you've made, either on my facebook page [www.facebook.com/handmadebymrsh](https://www.facebook.com/handmadebymrsh) or on your blog, just send me the link!

# **Piece A - Top**

**Cut 2 outer**

**2 lining**

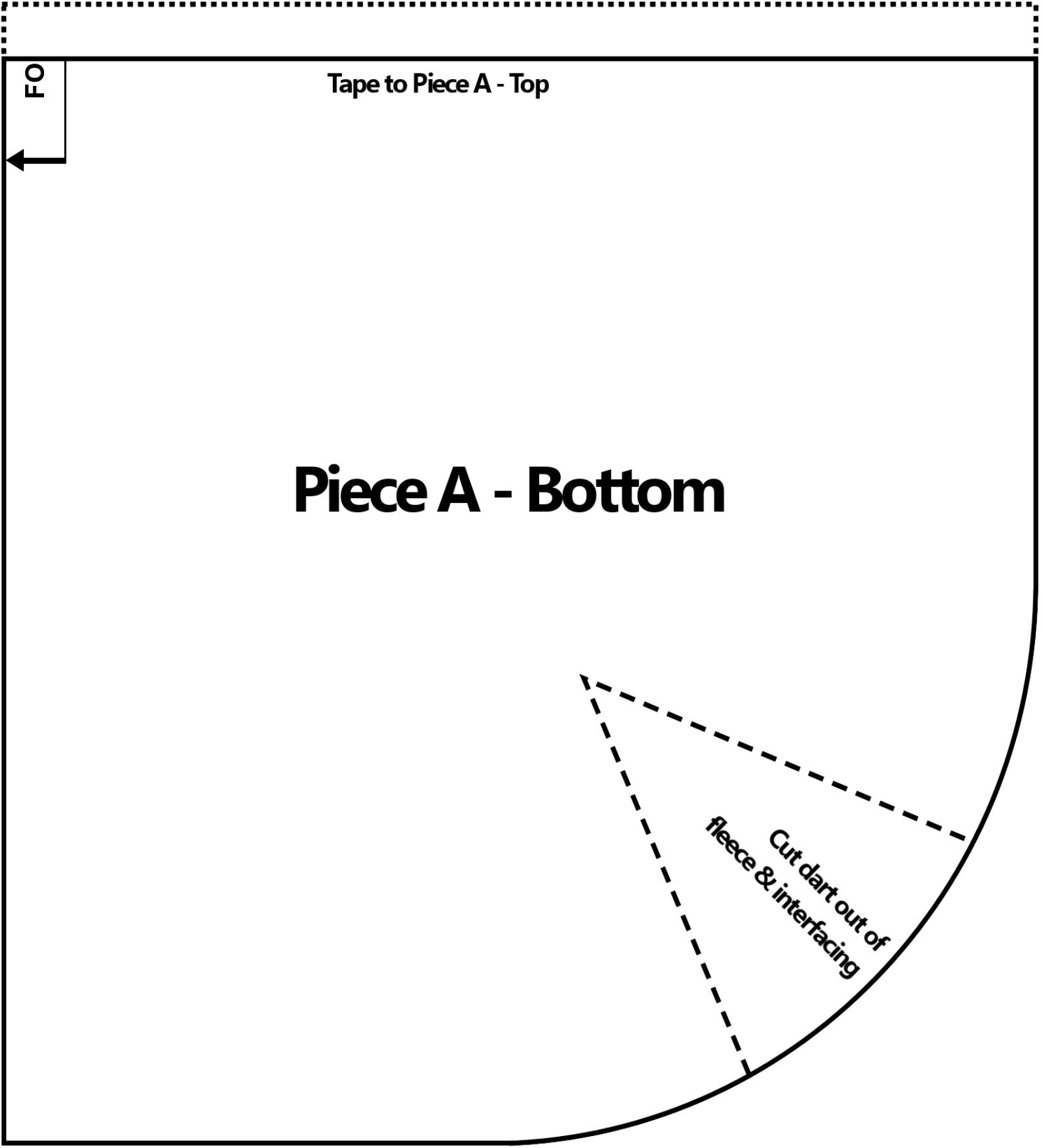
**2 fusible fleece**

**2 lightweight interfacing**

LD  
←

**Tape to Piece A - Bottom**





1 inch