

SLEEPY TIME friends

The center of this quilt looks like pieced blocks, but it's actually a panel. Add some simple appliqué, and you'll have this quilt finished before bedtime.

MATERIALS

PROJECT RATING: EASY

Size: 48½" x 59"

NOTE: Fabrics in the quilt shown are from the Lullaby Flannels collection by Sunshine Cottage for Northcott-Monarch.

1¾ yards panel fabric

⅜ yard red solid for appliqué and inner border

1 yard tan print for middle border

¼ yard multi-color print for outer border

¼ yard blue solid for appliqué and binding

4 fat quarters* in blue solid, red print, green solid, and green print for appliqué

Paper-backed fusible web

3 yards backing fabric

Twin-size quilt batting

*fat quarter = 18" x 20"

Cutting

Measurements include ¼" seam allowances. Border strips are exact length needed. You may want to make them longer to allow for piecing variations. Patterns for appliqué are on page 4. Follow manufacturer's instructions for using fusible web.

From panel fabric, cut:

- 1 (30" x 40½") rectangle, 4 "blocks" wide x 5 "blocks" long.

From red solid, cut:

- 4 (1"-wide) strips. From strips, cut 2 (1" x 40½") side inner borders and 2 (1" x 31") top and bottom inner borders.
- 16 Large Hearts.

From tan print, cut:

- 5 (6"-wide) strips. Piece strips to make 2 (6" x 42") top and bottom middle borders and 2 (6" x 41½") side middle borders.

From multi-color print, cut:

- 6 (4"-wide) strips. Piece strips to make 2 (4" x 52½") side outer borders and 2 (4" x 49") top and bottom outer borders.

From blue solid, cut:

- 6 (2½"-wide) strips for binding.
- 16 Small Flowers.

From blue solid fat quarter, cut:

- 16 Large Flowers.

From red print fat quarter, cut:

- 16 Small Hearts.

From green solid fat quarter, cut:

- 32 Large Leaves.

From green print fat quarter, cut:

- 32 Small Leaves.

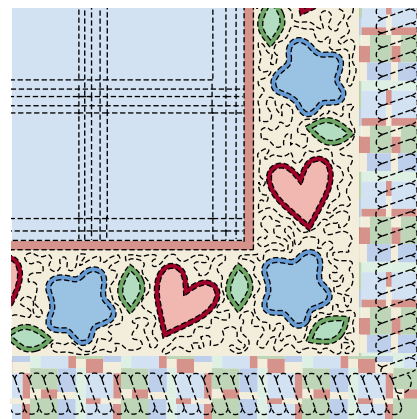
Quilt Assembly

1. Referring to *Quilt Top Assembly Diagram* on page 3, add red solid side inner borders to panel rectangle. Add top and bottom inner borders to quilt.
2. Repeat for tan print middle borders and blue print outer borders.

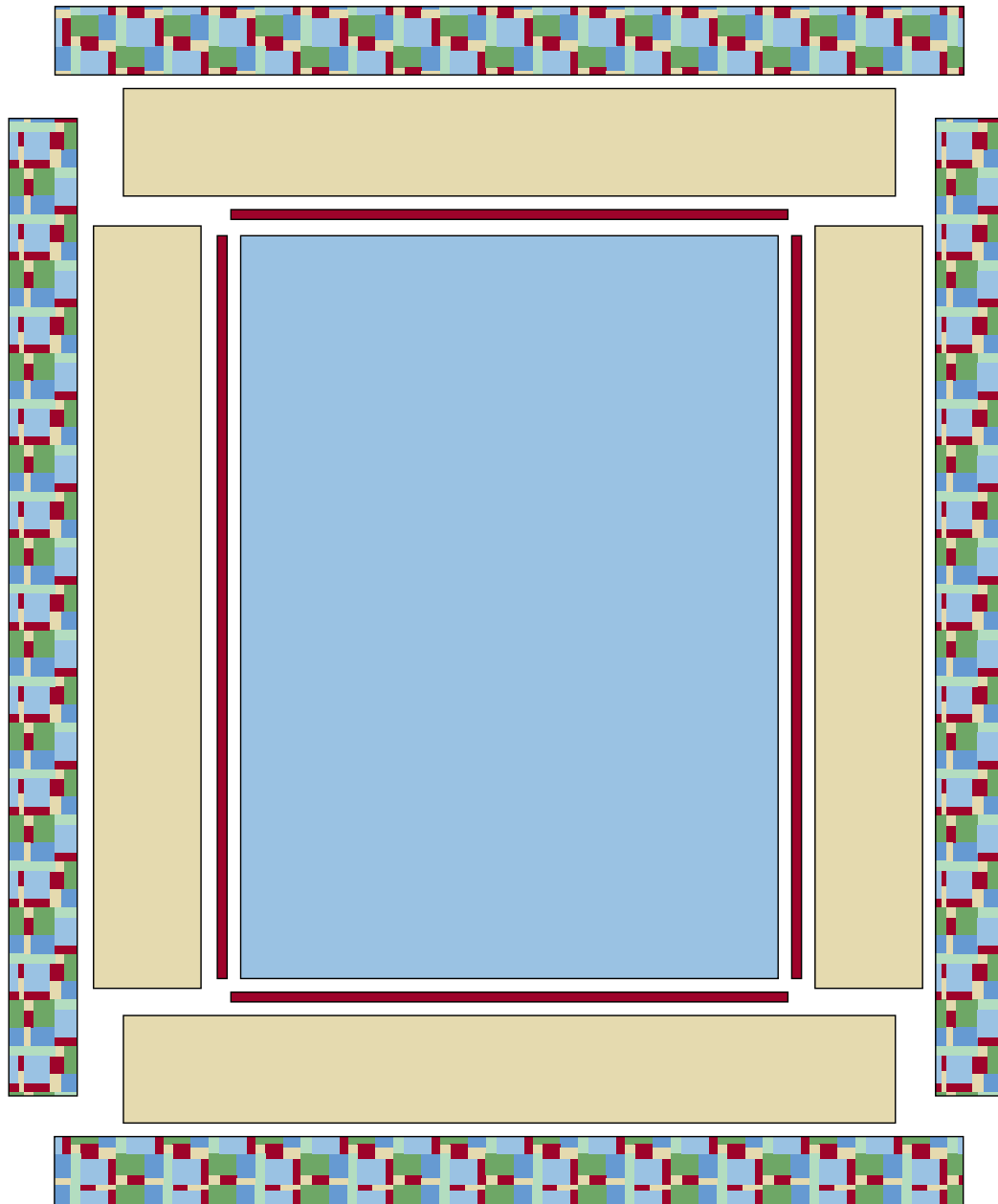
3. Arrange appliqué pieces atop middle border as shown in photo on page 36. Fuse in place. Machine blanket stitch around shapes using black thread.

Finishing

1. Divide backing into 2 (1½-yard) lengths. Join panels lengthwise. Seam will run horizontally.
2. Layer backing, batting, and quilt top; baste. Quilt as desired. Quilt shown was quilted in the ditch around the blocks, outline quilted around the panel designs and appliqué pieces, and has small meandering in the middle border and a cable in the outer border (*Quilting Diagram*).
3. Join 2½"-wide blue solid strips into 1 continuous piece for straight-grain French-fold binding. Add binding to quilt.



Quilting Diagram



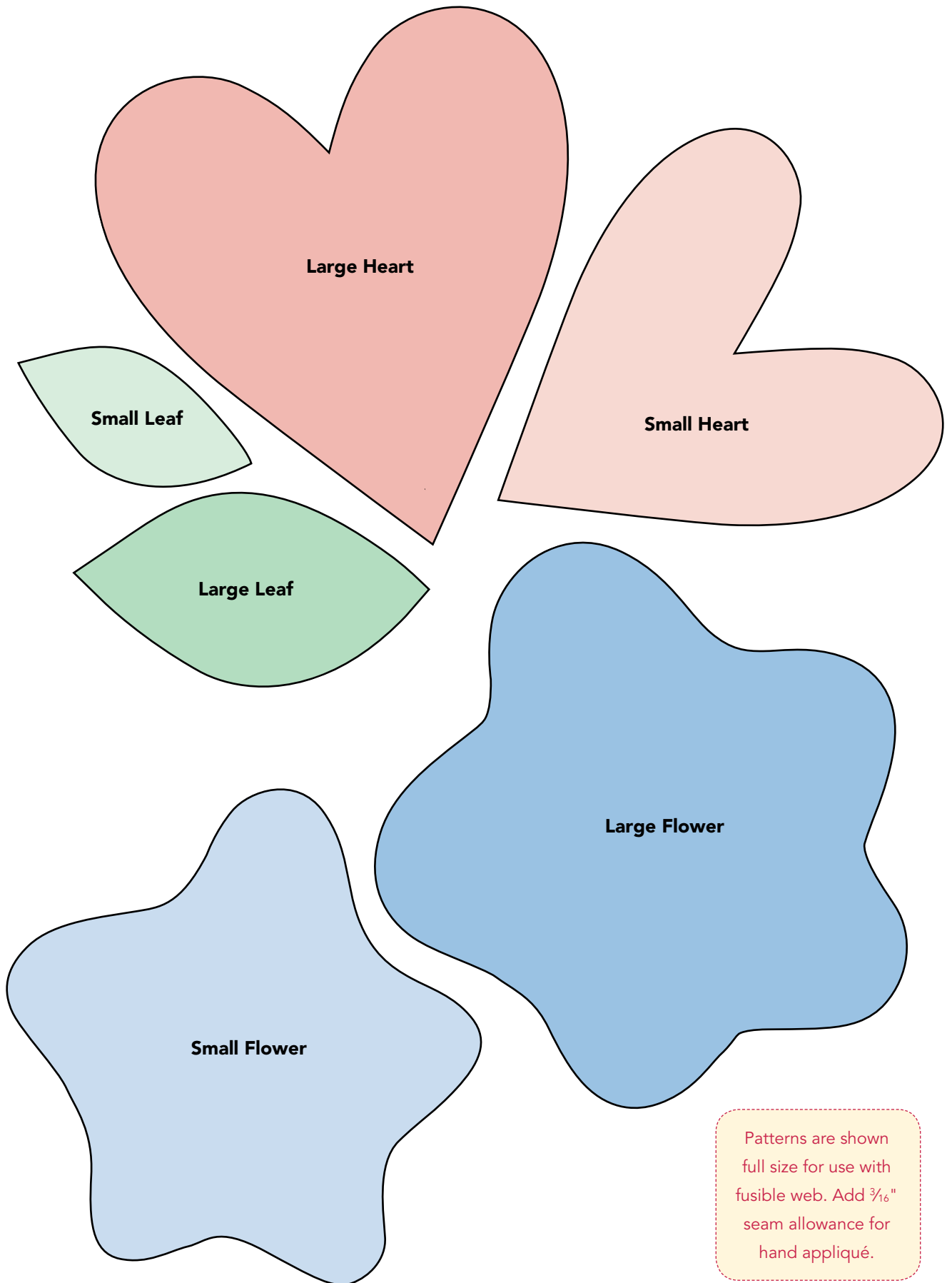
Quilt Top Assembly Diagram

DESIGNER



As Marketing Coordinator for Northcott-Monarch, Patti Carey enjoys playing with all the new fabrics her company produces. She loves to design quilts when new collections arrive, and hopes to inspire other quilters with her creations.

Contact her at: patti.carey@northcott.net ✂



Patterns are shown full size for use with fusible web. Add $\frac{3}{16}$ " seam allowance for hand appliqué.