

## Brown-eyed Susan

Finished Quilt Size: 54 1/2" x 65"

You can create your own flower garden so easily using fusible appliqué! With this method you will fuse your pieces and then machine quilt to secure the appliqué pieces and quilt layers in one step.

### Fabric Requirements

- Gold mottle (petals, middle border) - 1 1/2 yards
- Brown mottle (flower centers) - 1/4 yard
- Red texture (background, binding) - 2 1/8 yards
- Light green print (sashing, inner border) - 3/4 yard
- Green large floral (outer border) - 1 3/4 yards

### Other Stuff

- Batting - Twin size
- Backing (pieced widthwise) - 3 5/8 yards
- Paper-backed lightweight fusible web - 3 yards
- Sewing thread
- Machine quilting thread

[www.piecefulquilter.com](http://www.piecefulquilter.com)

Be sure to check out our other great patterns and one-of-a-kind hand painted fabrics on the web! If you don't have a computer, give me a call and I will send you a brochure!



©2005 Pieceful Quilter

1136 O'Neil St. © Philadelphia, PA 19123 © 215.627.2484  
michele@piecefulquilter.com

[www.piecefulquilter.com](http://www.piecefulquilter.com)

## Brown-eyed Susan



Finished Quilt Size: 54 1/2" x 65"



1136 O'Neil St. © Philadelphia, PA 19123 © 215.627.2484



# Brown-eyed Susan

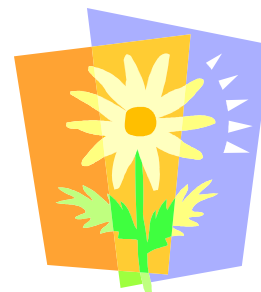
Finished Size: 54 1/2" x 65"

Number of Blocks & Finished size:

20 Brown-eyed Susan Blocks

9 1/2" x 9 1/2"

Page 1



Be sure to read over all of the directions before starting the project! ☺

Check out our website -  
[www.piecefulquilter.com](http://www.piecefulquilter.com)

## Step One: Cutting the fabric.

### Gold mottle

✂ \*4 strips 1 3/4" x 58", pieced  
from 8 WOF strips

✂ 160 Template A

### Brown mottle

✂ 20 Template B

### Red texture

✂ 20 squares 10" x 10"

### Light green print

✂ \*6 strips 1 1/2" x 48", pieced  
from 8 WOF strips

✂ \*2 strips 1 1/2" x 56", pieced  
from 3 WOF strips

✂ 15 strips 1 1/2" x 10"

### Green large floral

✂ 4 strips 4 3/4" x 60", cut on  
lengthwise grain

## Step Two: Piecing and appliquéing the blocks

1. Trace Templates A & B on paper side of paper-backed fusible web. Cut apart, leaving a small margin beyond drawing lines.
2. Following manufacturer's instruction, fuse to wrong side of appropriate fabrics. Cut apart on drawn lines.
3. Finger press red texture 10" square in half lengthwise and crosswise; use these folds as placement guides.
4. Referring to the diagram on the right, position template fabrics as shown. Following manufacturer's instructions, fuse in place to make Brown-eyed Susan block. Make 20.

**Note:** The flowers are temporarily fused. Expect for the petals to possibly come loose from the background fabric. After the top is pieced, layered and basted, you will machine quilt the petals to secure them permanently.

## Notes

WOF—means width of fabric or selvedge to selvedge.

\* means to cut first

See insert for appliqué templates. Templates are printed reversed and **without seam allowance** for use with paper-backed fusible web. Be sure to read directions thoroughly before cutting.

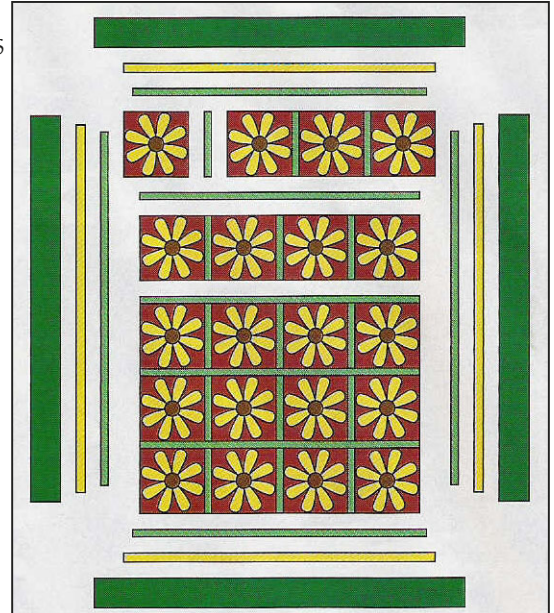


Make 20



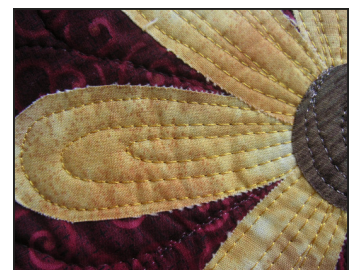
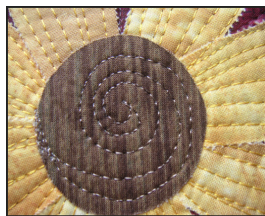
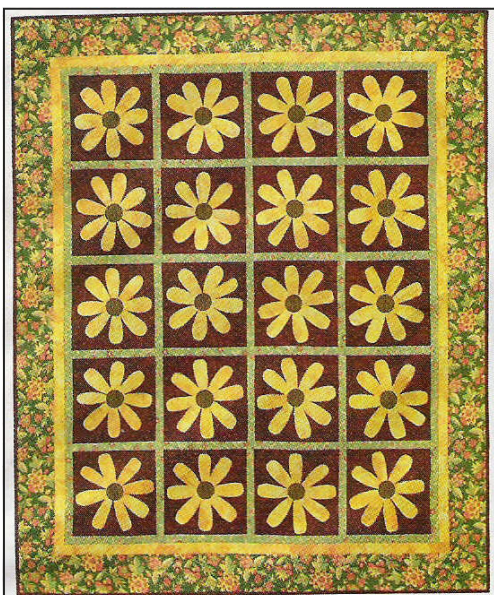
### Step Three: Assembling the Top

1. Referring to Assembly Diagram to the right, sew 5 block rows of 4 blocks with 3 light green print  $1\frac{1}{2}$ " x 10" strips each.
2. Alternating block rows with 4 light green  $1\frac{1}{2}$ " x 48" strips, sew rows together.
3. Trim strips even with block rows.
4. Sew light green  $1\frac{1}{2}$ " x 56" strips to sides; trim even with top and bottom.
5. Stitch remaining green strips to top/bottom; trim even with sides.
6. Sew gold  $1\frac{3}{4}$ " x 58" strips to sides; trim even.
7. Stitch remaining gold strips to top/bottom. Trim even.
8. Sew large green floral  $4\frac{3}{4}$ " x 60" strips to the sides; trim even.
9. Stitch remaining green large floral strips to top/bottom; trim even.



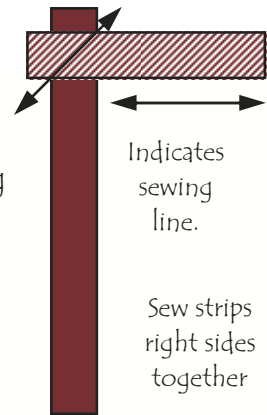
### Step Four: Baste, Quilt/Appliqué

1. Layer and baste quilt top in preparation of machine quilting.
2. Begin by securing the quilt and machine quilt "in the ditch" of all of the seams of the blocks, sashing, and borders. Before doing this, you must be sure that all of the fullness is ironed out. I used monofilament (invisible) thread for this.
3. Machine quilt a spiral on the centers. I used a brown rayon for this. See picture below.
4. Machine quilt three large loops on each petal. I used a yellow rayon for this. See picture below.
5. Using monofilament (invisible) thread, free motion quilt a meander all around the outside border.



## Step Five: Binding your Quilt

1. To make pieced binding, cut seven 2 1/2" x WOF (Width of fabric) strips from the red mottle fabric.
2. Sew strips together as shown in the diagram to the right. Trim 1/4" from sewing line. Do this four times.
3. Fold strips in half lengthwise **wrong** sides together and press.
4. Cut two strips 68". Pin these strips to either side of your quilt so that the raw edge of your quilt and raw edge of your binding are even. (The binding is **on top** of the quilt top; folded edges are facing each other, raw edges facing out.)
5. Sew strips to the sides using a 1/4" seam allowance through all layers. You may want to use a longer stitch and your walking foot for this.
6. Trim bindings even with the top and bottom. Turn binding to the back, secure with pins or binding clips, and blindstitch to the quilt back. Use thread that matches your binding for best results.
7. Cut the remaining strip in half. Pin strips to the top and bottom of your quilt so that the raw edge of your quilt and raw edge of your binding are even.
8. Sew binding using a 1/4" seam allowance through all layers leaving an extra 2" of binding at each end. Remember to use a longer stitch for this.
9. Fold the raw edge of binding in, and then fold binding towards the back of the quilt and secure with pins or binding clips. Blindstitch in place, stitching corners securely.



☺ Be sure to sign your quilt – it is as important as making it. It documents to future generations who made the quilt and when. Your label should include the name of the quilt, the quiltermaker, and date. Special feelings or messages are also a great addition. These messages can be typed and printed on muslin or written with a fabric-marking pen. If you don't want to make a label, you can embroider your name and date on the top or bottom of the quilt. ☺

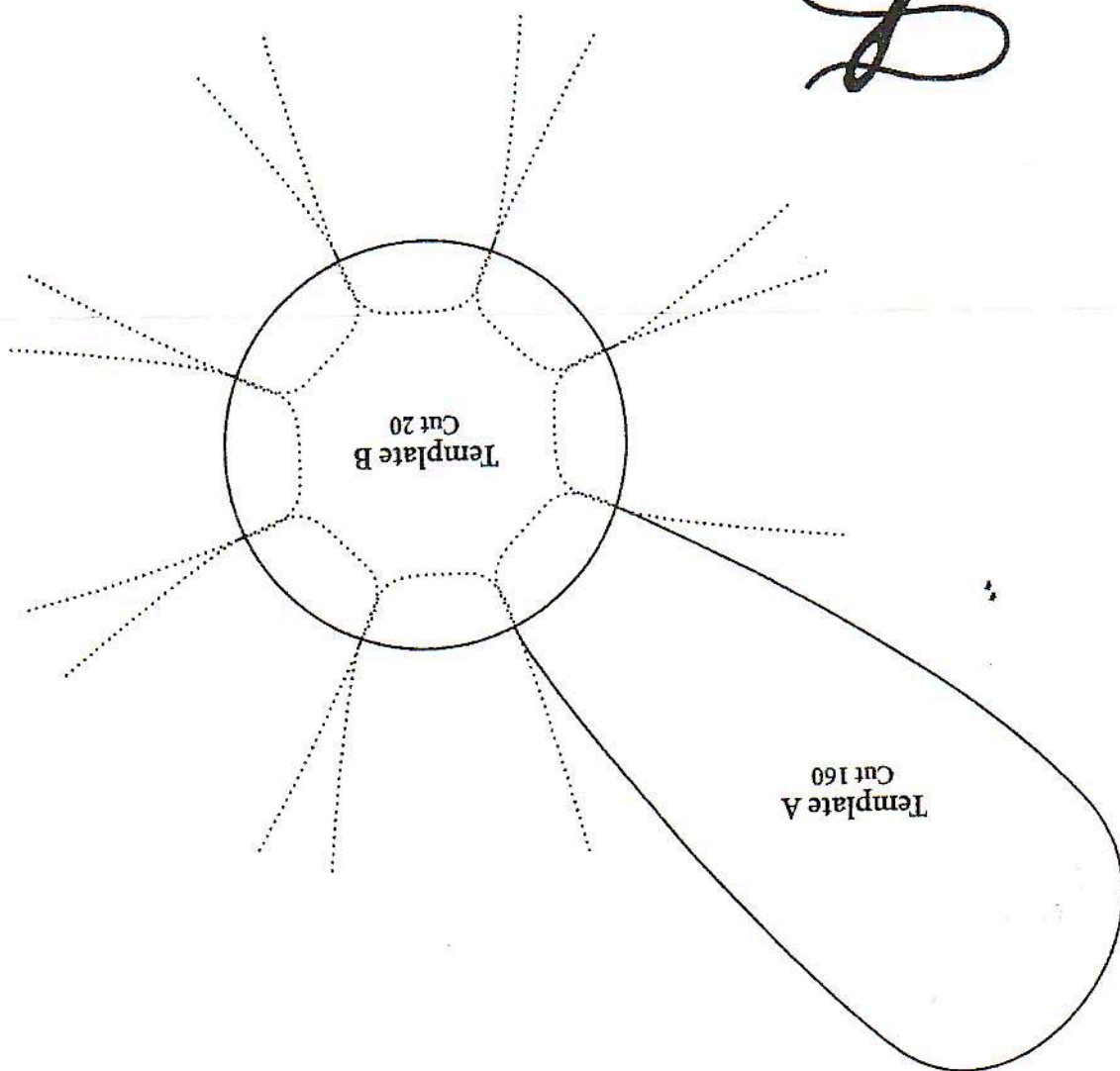


Michele Scott  
101 Carriage Way  
Deptford, NJ 08096

Phone: 856-579-7042  
Email: michele@piecefulquilter.com

We hope you enjoy this quilt for a lifetime. Please feel free to write, call or email us if you have any questions about this pattern or would like to see a brochure of **all** of our patterns and fabrics. We do our own one-of-a-kind painted fabrics that are a "must have". Check out our website, [www.piecefulquilter.com](http://www.piecefulquilter.com), and see everything for yourself!

Piece, Michele Scott



Brown Eyed  
Susan