

FREEBEE PATTERN FROM

Nancy Murty

sentiments quilt



www.bee creativestudios.com

© 2011 Nancy Murty



sentiments quilt

Skill level: Experienced Beginner

Quilt finishes 41" x 53"

Add borders to an adorable printed panel and you'll have that baby shower gift done in an afternoon. e sweet animals and fresh colors are sure to please the new mom in your life.

fabric requirements/cutting:

All borders are cut crosswise and pieced. Measurements for borders are the exact lengths required. WOF designates the width of fabric from selvedge to selvedge (approximately 42" wide).



2/3 yards center panel (5375-M)

- Cut 1 rectangle 20 1/2" x 32 1/2" = A, refer to "Cutting the Panel"



1/4 yards inner border (5377-P)

- Cut right inner border 2 1/2" x 32 1/2" = B
- Cut top inner border 2 1/2" x 24 1/2" = C



1/4 yards inner border (5376-B)

- Cut left inner border 2 1/2" x 32 1/2" = D
- Cut bottom inner border 2 1/2" x 24 1/2" = E



3/4 yards pieced border, binding (5377-T)

- Cut 20 squares 3 7/8" x 3 7/8" = F
- Cut 5 strips 3" x wof for binding



1/4 yards pieced border (5378-M)

- Cut 5 squares 7 1/4" x 7 1/4" = G



1/8 yards corners-pieced border (5376-E)

- Cut 4 squares 3 1/2" x 3 1/2" = H



5/8 yards outer border (5376-G)

- Cut right outer border 6" x 42 1/2" = I
- Cut top outer border 6" x 41 1/2" = J



5/8 yards outer border (5377-G)

- Cut left outer border 6" x 42 1/2" = K
- Cut bottom outer border 6" x 41 1/2" = L

- 2 3/4 yards for backing fabric
- 48" x 60" low loft batting

cutting the panel to size:

Cutting the large **Sentiments** panel to size can be a little intimidating. The panel can also be slightly distorted due to the process of wrapping the fabric on to the bolt. Here is the process I use to cut the panel to the required size of 20 1/2" x 32 1/2". **DO NOT PRE-WASH THE PANEL FABRIC.**

1. Using a clear acrylic ruler, measure 1" from the edge of the chicken, sheep and lion boxes (red dotted line) along the right side of the panel. Using a rotary cutter, trim along acrylic ruler, indicated by solid red line in illustration. Slide ruler along as necessary to trim entire side of the panel.



2. Repeat for the left side of the panel, cutting 1" from the chicken, bear and bunny boxes.

3. Measure 1 3/4" from the top of the bear box and trim. Measure 1 3/4" from the bottom of the lion box and trim.

Note: Panel may not be a true rectangle but can be eased into the inner border and will become the correct shape in the final quilt.

making the quilt top:

4. Referring to the quilt assembly for fabric placement, join right inner border to the side of the panel. Repeat with the left inner border. Similarly, sew the top and bottom inner borders to the quilt. Press seams to one side.

5. Follow the "Gaggle of Geese" method to make 20 flying geese units.

6. Referring to the quilt assembly diagram, join (6) flying geese units to make a side border. Repeat. Matching centers and ends, sew the side borders to the quilt.

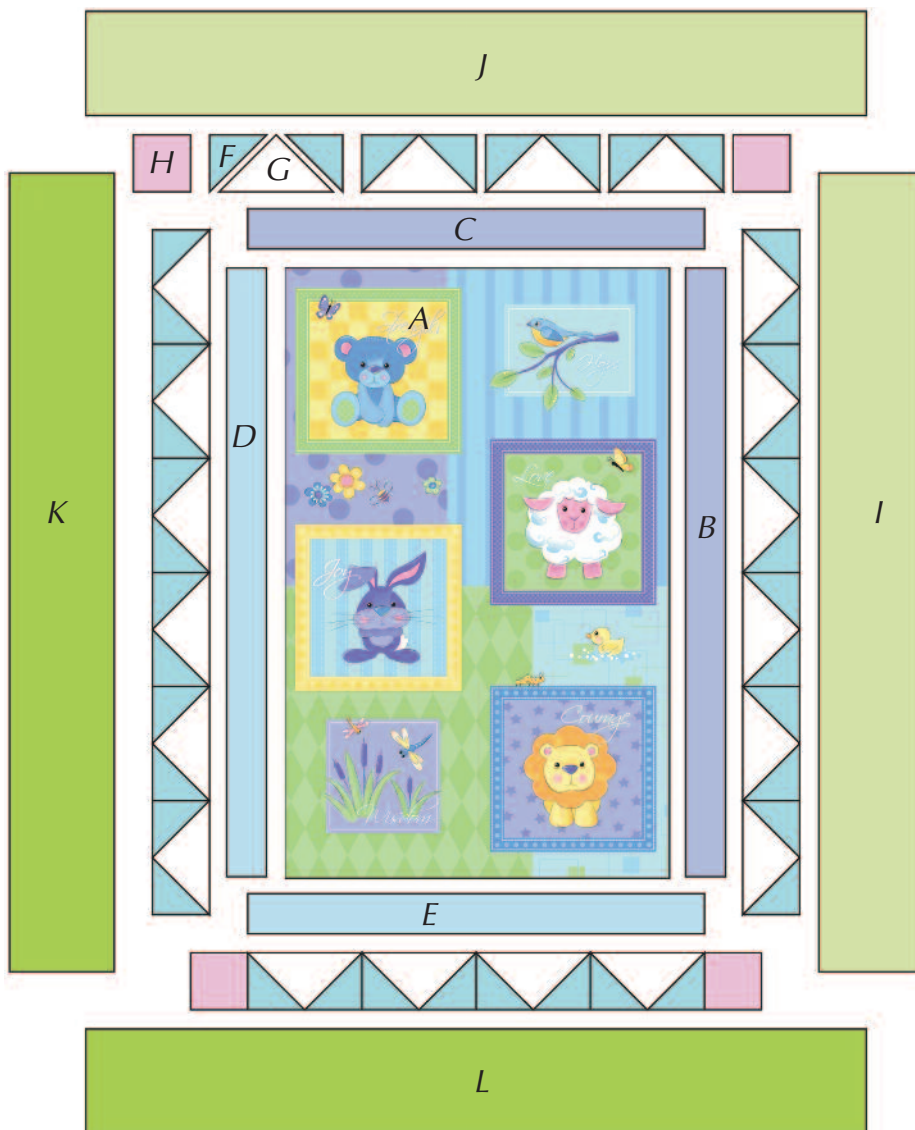
7. Join (4) flying geese units to make the top border. Sew a pink fabric H square to each end. Matching centers, ends, and side seams, sew this border to the top of the quilt. Repeat for the bottom border.

8. Join the right outer border to the side of the quilt. Repeat with the left outer border. Similarly, sew the top and bottom outer borders to the quilt. Press seams toward the outer border.

finishing the quilt:

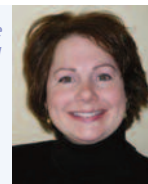
9. Layer quilt with batting and backing. Quilt in the ditch around borders and around the printed motifs in the center panel. Bind to finish the quilt. For help with binding a quilt, look for "Binding Secrets" in the FreeBee section of the website, www.bee creativestudio.com.

I hope you have enjoyed this project and it brings a smile to a little ones face.



The directions of this FreeBee are written with the assumption that the quilter has a basic knowledge of quilting. There are many great books and talented teachers available at local shops, quilt guilds or among our fellow quilting friends. And there is nothing as good as hands on help, so you may want to look to one of these sources for additional help if needed.

Be sure to visit www.bee creativestudio.com to see the great patterns available and fabrics designed by Nancy Murty. You can connect further with Nancy Murty on Twitter and join Bee Creative Studio on Facebook. For a sneak peek into the studio, visit nancymurty.typepad.com to read Nancy's blog.





gaggle of geese

Skill level: Experienced Beginner

*I just love this method for making flying geese. Small squares are cut $\frac{7}{8}$ " larger than the height of the finished goose. The large square is cut $1\frac{1}{4}$ " larger than the length of the goose. So if a finished goose measures 3" x 6" cut 4 squares $3\frac{7}{8}$ " and 1 square $7\frac{1}{4}$ " for every 4 flying geese units needed in the project. **Do NOT cut the squares in half diagonally!***

helpful tools:

- Quick Quarter II tool
- Scissors
- Thread
- Mechanical Pencil
- Sewing Machine
- Sewing Machine Needles



Gather together 4 small squares and 1 large square, mechanical pencil and Quick Quarter II tool.



1. Position the Quick Quarter tool diagonally across the wrong side of the smaller squares, lining up the corners of the square with the center-line of the bar.



2. Using a mechanical pencil, lightly draw a line next to each side of Quick Quarter bar as well as in the slotted openings along the center of the tool. Mark remaining small squares.



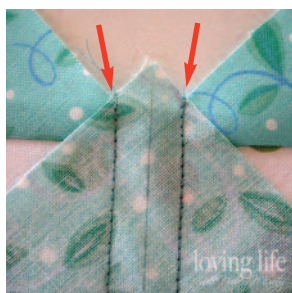
3. With right sides together, pair up the large square with 2 marked small squares. Set two small squares at opposite corners of the large square. The drawn lines should line up between the two squares.



4. Sew on the two outside drawn lines. Separate by cutting along center dashed line. Press seams toward the small triangles.



5. With right sides together, place a small marked square on each of the units created in the previous step.



6. Sew on outside drawn lines. The sewing should be in line with the "V" created by the unit and small square, indicated by red arrows in the picture.



7. Cut along dashed lines to separate. Press seams toward the small triangle.



8. Trim away the "dog ears" or the little points that extend beyond the rectangular shape of the goose unit. Trim even with the goose rectangle.

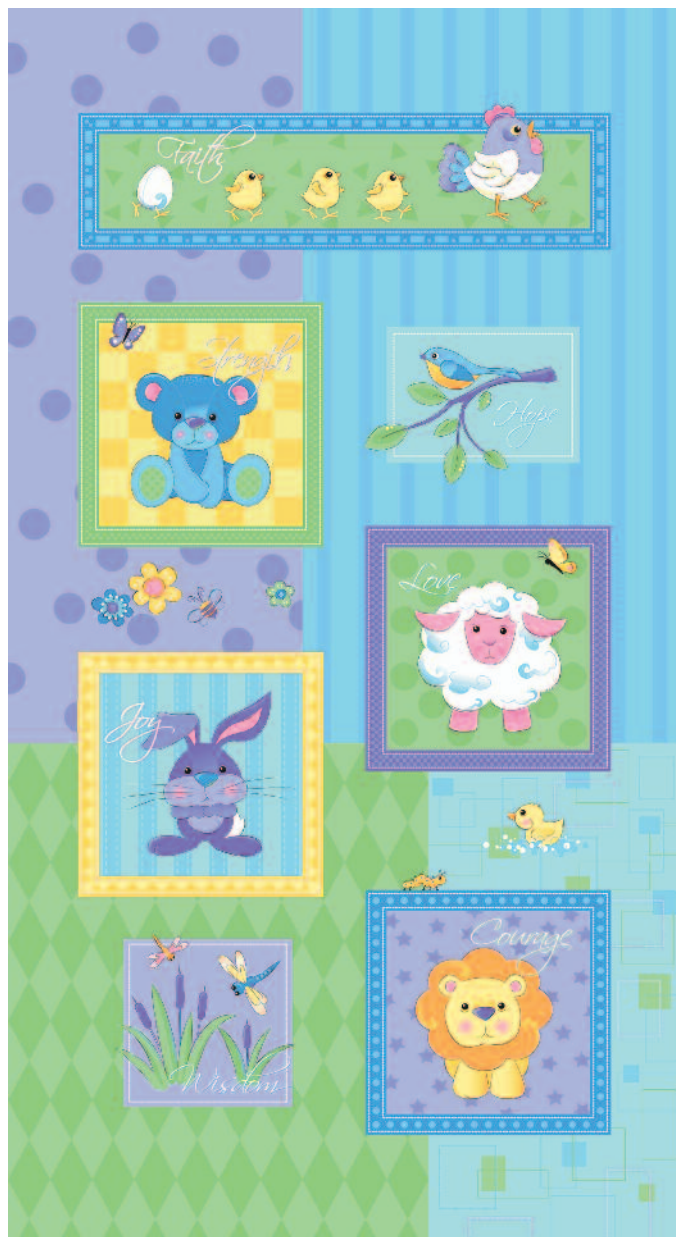


You should have 4 flying geese units. Repeat steps for additional flying geese.

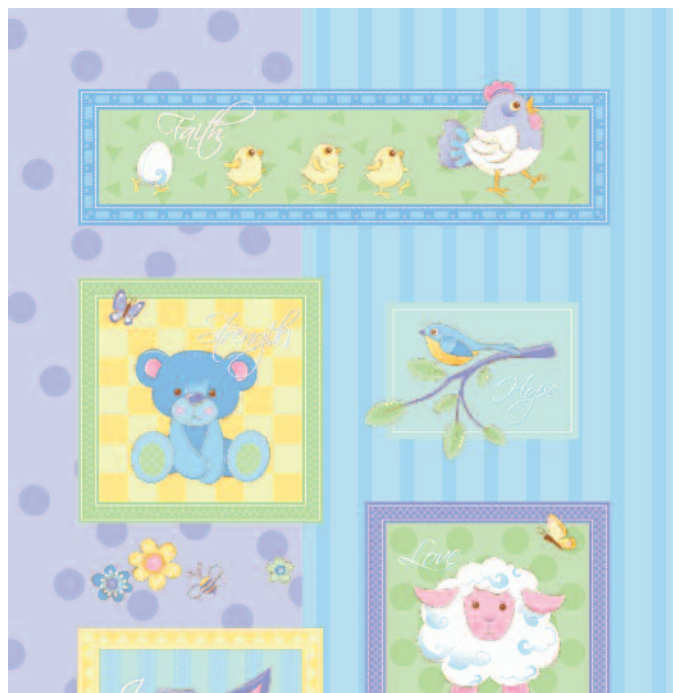
DESIGNED BY *Nancy Murty* Sentiments



1384 Broadway
New York, NY 10018
(800) 223-5678
www.andoverfabrics.com



5375-M * (panel)



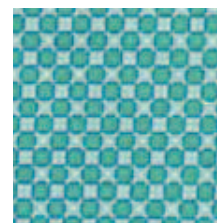
5375-L (panel)



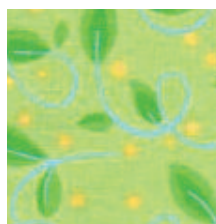
5376-G*



5377-T*



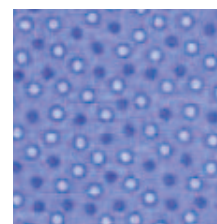
4968-T



5377-G*



5376-B*



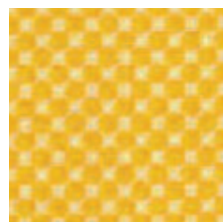
4965-P



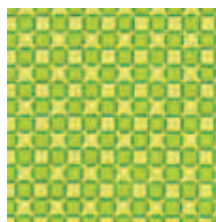
5376-E*



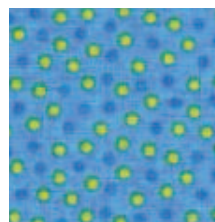
5378-M*



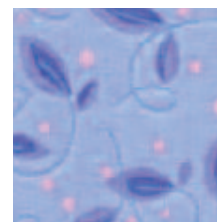
4968-Y



4968-G



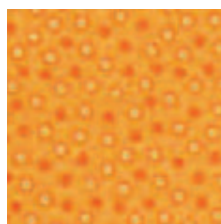
4965-B



5377-P*



5378-E



4965-O



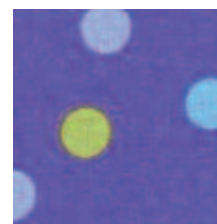
5378-Y



5378-G



5378-B



5378-P

* Indicates fabric used in quilt pattern. Companion fabrics are shown 70% of actual size, panels are shown 15% of actual size.